

# STEVENS MARINE

**2026** BOATS, MOTORS & MORE



**ALUMAWELD   KINGFISHER   SMOKER CRAFT   SUNCHASER   STARCRAFT   MERCURY**



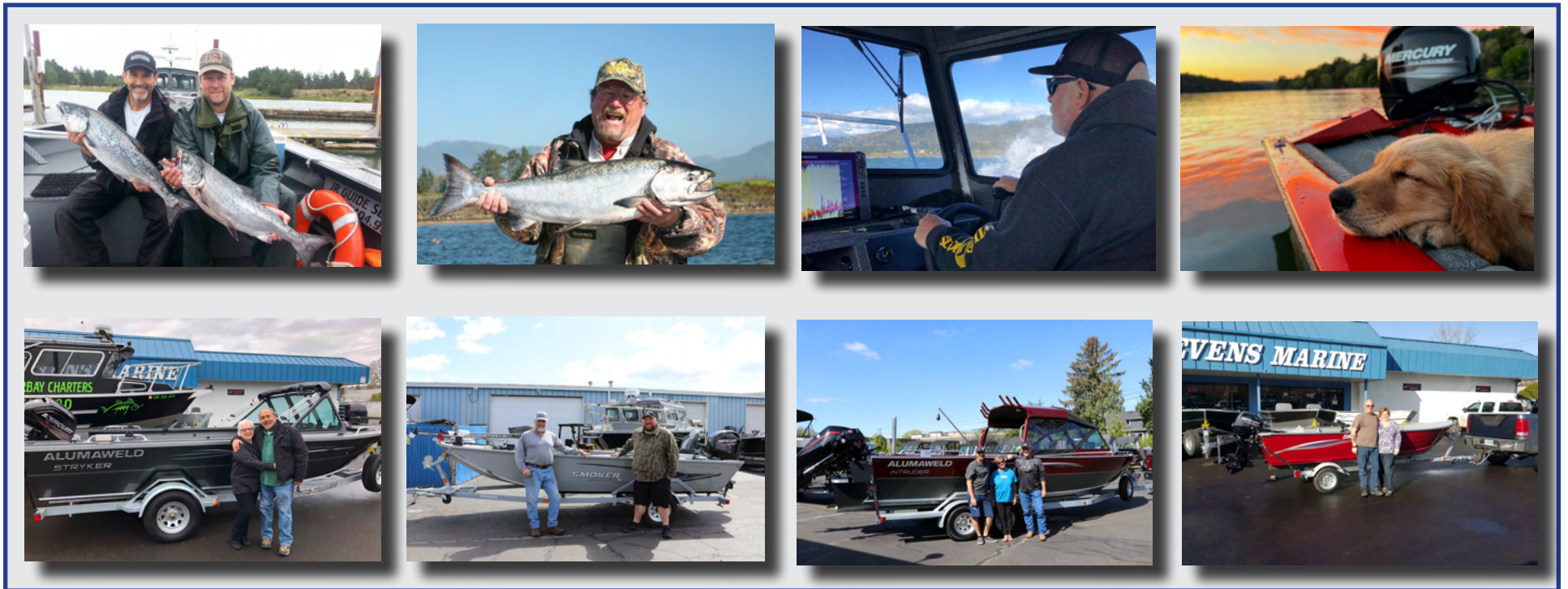
# STEVENS MARINE | About Us

Passion. Community. Adventure.

Stevens Marine has built a reputation for excellence, thanks to our dedicated customer service and passion for boating. Our team doesn't just work here — we live the boating lifestyle. Whether we're out trolling for salmon, crabbing, or just enjoying time with family, we're doing what we love, just like you.

It's this passion that makes Stevens Marine one of the top boat dealers in the region. We're more than just a business — we're a community of boating enthusiasts, ready to help you find your next adventure.

"We live the boating lifestyle — just like you."



Stevens Marine — Where Community Meets Adventure.



KNOWLEDGE. EXPERIENCE. PASSION.

At Stevens Marine, our team is more than just a group of boating enthusiasts — we're a family. With decades of combined experience, each member brings passion, expertise, and a commitment to making your boating experience the best it can be.

Whether you're buying your first boat or upgrading, our friendly and knowledgeable team is here to guide you every step of the way.

Serving Portland, Oregon from our Milwaukie (East) and Tigard (West) locations.

## In Memory Of



60 YEARS  
**PAGE STEVENS**  
FOUNDER—*The Foundation  
We Build Upon.*

## Leadership



27 YEARS  
**ERIC STEVENS**  
PRESIDENT

## Store Management



40 YEARS  
**CHRIS BURGI**  
STORE MANAGER  
MILWAUKIE



10 YEARS  
**RON GULLEY**  
SERVICE MANAGER  
MILWAUKIE



38 YEARS  
**ERIC PEDERSEN**  
STORE MANAGER  
TIGARD



27 YEARS  
**MIKE DENNIS**  
SERVICE MANAGER  
TIGARD

## Celebrating 55 Years of Service



## Sales Experts: Knowledge & Experience for Your Boat Purchase



**MIKE GEERTSEN**  
SALES ASSOCIATE  
MILWAUKIE



**CHRISTIAN RUSCITTI**  
SALES ASSOCIATE  
MILWAUKIE



**TRENT VANZANT**  
SALES ASSOCIATE  
TIGARD



**NELSON JUTILA**  
SALES ASSOCIATE  
TIGARD



**AYDEN SCHNEIDER**  
SALES ASSOCIATE  
MILWAUKIE



**COULD BE YOU!**  
SALES ASSOCIATE  
MILWAUKIE



**WAYNE BARTLETT**  
SALES ASSOCIATE  
TIGARD



**JEREMY CAMPBELL**  
SALES ASSOCIATE  
TIGARD

Stevens Marine — A Team You Can Trust



APPLY TODAY!

stevensmarine.com | ABOUT US 3

# ALUMAWELD | Since 1971

Built to Perform. Built to Last.



For more than 55 years, Alumaweld has been building heavy-gauge welded aluminum boats that stand the test of time. Designed and built in White City, Oregon, every Alumaweld is engineered for strength, performance, and reliability on the water.

From exclusive extrusions and bottom strakes to precision-crafted hulls, each boat reflects a commitment to durability and innovation. That's why Alumaweld is trusted by anglers across the nation — for all seasons, in all waters.

*“The trusted choice for all-season boating.”*

## Signature Features – Standard on Every Alumaweld

- Aluma-Coat Interior
- Armor Tech™ premium floorboards with Dura Tuff™ non-skid vinyl
- Built-in aluminum fuel tank with gauge
- Deluxe switch panel with dual USB ports & 12V outlet
- Electric bilge pump
- Enhanced sidewall design
- Exclusive extrusions
- Exclusive lifetime hull warranty
- Extruded lifting & turning strakes
- Full-length box girders
- Full-length storage trays
- Locking foredeck storage
- Rogue galvanized trailer
- Welded bow fish box with locking lid

Alumaweld — Engineered in Oregon. Trusted Nationwide.

# FREE DRIFTER



**Starting at**  
**\$353**  
Per Month OAC

18'	<b>\$42,300</b>	Mercury 60 CT EFI
20'	<b>\$44,675</b>	Mercury 60 CT EFI
18' Jet	<b>\$45,995</b>	Mercury 90/65 Jet EFI
20' Jet	<b>\$49,925</b>	Mercury 115/80 Jet EFI

## Standard Features

- (2) Deluxe comfort seats on storage boxes
- Dual locking depth finder boxes (Port & Starboard)
- Double door extended step deck with extra-wide transom tray & hot box
- Extra-wide tackle trays & locking rear storage
- Hot water sink | Welded swim platform with tie-down eyes (18')
- Two bolt-on transducer bracket
- Anchor nest (18')
- Rogue trailer with swing tongue



Model Specs	Length	Beam	Beam at Chine	Inside Freeboard	Side Height	Transom Height	Deadrise	Bottom Thickness	Side Thickness	Persons/Capacity	Approx. Weight	Weight Capacity	Fuel Capacity	Max HP Prop/Jet
18'	20' 1"	84"	66"	24"	28"	26"	6° w/shoe	0.160	0.125	5/750 lbs	1,250 lbs	1,500 lbs	37 Gal	75/80 HP
20'	20' 1"	84"	66"	24"	28"	26"	6° w/shoe	0.160	0.125	5/750 lbs	1,320 lbs	1,500 lbs	37 Gal	75/80 HP

Images may depict optional features not included in the package pricing. Prices and specifications are subject to change without notice

stevensmarine.com | ALUMAWELD 5

# ADVENTURER

**Starting at**  
**\$408**  
Per Month OAC

18'	<b>\$48,875</b>	Mercury 90 CT EFI
20'	<b>\$51,445</b>	Mercury 90 CT EFI
22'	<b>\$58,460</b>	Mercury 115 CT EFI
18' Jet	<b>\$50,730</b>	Mercury 115/80 Jet EFI
20' Jet	<b>\$53,300</b>	Mercury 115/80 Jet EFI
22' Jet	<b>\$63,425</b>	Mercury 150/105 Jet EFI

## Standard Features

- (2) Deluxe comfort seats on storage boxes
- Dual locking depth finder boxes (Port & Starboard)
- Double door extended step deck with extra-wide transom tray & hot box
- Extra-wide tackle trays & locking rear storage
- Hot water sink
- Welded swim platform with tie-down eyes (18')
- Anchor nest (18')
- Ride Master Vee Bottom
- Rogue trailer

Model Specs	Length	Beam	Beam at Chine	Inside Freeboard	Side Height	Transom Height	Deadrise	Bottom Thickness	Side Thickness	Persons/Capacity	Approx. Weight	Weight Capacity	Fuel Capacity	Max HP Prop/Jet (Remote/Tiller)
18'	20' 1"	88.5"	72"	30"	32"	25"	14°	0.160	0.125	5/750 lbs	1,240 lbs	1,500 lbs	38 Gal	115/80 HP
20'	20' 1"	88.5"	72"	30"	32"	25"	14°	0.160	0.125	5/750 lbs	1,280 lbs	1,500 lbs	38 Gal	115/105 HP
22'	22' 1"	88.5"	72"	30"	32"	25"	14°	0.190	0.125	5/750 lbs	1,400 lbs	1,500 lbs	38 Gal	150/105 HP

# SUPER VEE & SUPER VEE PRO



**Starting at**  
**\$448**  
**Per Month OAC**

20' SV	<b>\$52,890</b>	Mercury 90 CT EFI
21' SVP	<b>\$65,730</b>	Mercury 115 CT EFI
23' SVP	<b>\$74,915</b>	Mercury 150 EFI
25' SVP	<b>\$78,750</b>	Mercury 150 EFI
20' SV Jet	<b>\$58,700</b>	Mercury 150/105 Jet EFI
21' SVP Jet	<b>\$70,850</b>	Mercury 150/105 Jet EFI
23' SVP Jet	<b>\$73,860</b>	Mercury 150/105 Jet EFI
25' SVP Jet	<b>\$84,675</b>	Mercury 200/140 Jet EFI

## Standard Features

- Dual locking depth finder boxes (Port & Starboard)
- Extended step deck with dry storage & fish box
- Pro transom storage box with (2) doors, hot box & SouthCo latches | Rogue trailer

## 20' Super Vee Standard Features

- (2) Deluxe comfort seats on aluminum storage boxes
- Six lifting/turning strakes | Full-length storage trays with tray rubber

## 21'-25' Super Vee Pro Standard Features

- (4) Deluxe comfort seats on adjustable aluminum storage boxes | Six lifting/turning strakes
- Swing-away tongue (21' only) | Tandem axle Rogue trailer (21'-25' only)

Model Specs	Length	Beam	Beam at Chine	Inside Freeboard	Side Height	Transom Height	Deadrise	Bottom Thickness	Side Thickness	Persons/Capacity	Approx. Weight	Weight Capacity	Fuel Capacity	Max HP Prop/Jet
20' SV	20' 3"	93.5"	72"	26"	30"	20"	6°	0.190	0.125	6/900 lbs	1,395 lbs	1,700 lbs	35 Gal	115/105 HP
21' SVP	21' 5"	98"	82"	30"	30.5"	25"	6°/10°	0.190	0.125	7/1,050 lbs	1,620 lbs	1,850 lbs	37 Gal	250/175 HP
23' SVP	23' 5"	98"	82"	30"	30.5"	25"	6°/10°	0.190	0.125	9/1,350 lbs	1,780 lb	2,120 lbs	37/45 Gal	250/175 HP
25' SVP	25' 5"	98"	82"	30"	30.5"	25"	10°	0.190	0.160	9/1,350 lbs	2,150 lbs	2,120 lbs	37/45 Gal	250/175 HP

# COLUMBIA & COLUMBIA XL

**Starting at**  
**\$570**  
Per Month OAC

**New**

21'	<b>\$79,260</b>	Merc 150 EFI	24' XL	<b>\$94,775</b>	Merc 150 XXL EFI
23'	<b>\$82,275</b>	Merc 150 EFI	26' XL	<b>\$98,660</b>	Merc 150 XXL EFI
25'	<b>\$86,160</b>	Merc 150 EFI	28' XL	<b>\$104,940</b>	Merc 150 XXL EFI
21' Jet	<b>\$78,200</b>	Merc 150/105 Jet EFI			
23' Jet	<b>\$81,200</b>	Merc 150/105 Jet EFI			
25' Jet	<b>\$92,100</b>	Merc 150/105 Jet EFI			

## Standard Features

- (4) Deluxe comfort seats on adjustable storage boxes
- Pro transom with (2) locking storage doors & hot box
- Extended three-compartment step deck with dry storage & fish boxes
- Rod grippers (four position) | Six full-length lifting/turning strakes
- Bolt-on powder coated cleat on inner foredeck
- Rogue tandem axle trailer with disc brakes on both axles

## XL Features **New**

- XL foredeck storage locker with locking door

Model Specs	Length	Beam	Beam at Chine	Inside Freeboard	Side Height	Transom Height	Deadrise	Bottom Thickness	Side Thickness	Persons/Capacity	Approx. Weight	Weight Capacity	Fuel Capacity	Max HP Prop/Jet
21'	21' 5"	101"	82"	29"	33"	31"	14°	0.190	0.125	7/1,050 lbs	1,925 lbs	1,850 lbs	45 Gal	250/175 HP
23'	23' 5"	101"	82"	29"	33"	31"	14°	0.190	0.125	9/1,350 lbs	2,050 lbs	2,120 lbs	60 Gal	250/175 HP
25'	25' 5"	101"	82"	29"	33"	31"	14°	0.190	0.125	9/1,350 lbs	2,050 lbs	2,120 lbs	60 Gal	250/175 HP
<b>New</b> 24' XL	23' 9"	109"	90"	31"	34"	30"	14°	0.250	0.160	7/1,050 lbs	1,925 lbs	1,850 lbs	60 Gal	300/175 HP
<b>New</b> 26' XL	25' 9"	109"	90"	31"	34"	30"	14°	0.250	0.160	9/1,350 lbs	2,050 lbs	2,120 lbs	60 Gal	300/175 HP
<b>New</b> 28' XL	27' 9"	109"	90"	31"	34"	30"	14°	0.250	0.160	9/1,350 lbs	2,050 lbs	2,120 lbs	60 Gal	300/175 HP

# PACIFIC CC & XD



**Starting at**  
**\$592**  
**Per Month OAC**

22' CC	<b>\$80,900</b>	Mercury 150 EFI
24' CC	<b>\$86,320</b>	Mercury 150 EFI
26' CC	<b>\$92,880</b>	Mercury 150 EFI
24' XD	<b>\$99,425</b>	Mercury 150 EFI
26' XD	<b>\$104,850</b>	Mercury 150 EFI

## Standard Features

- ( 4 ) Deluxe comfort seats on aluminum storage boxes
- Center console steering with 50" stand-up console
- Large three-compartment step deck with dry storage & oversized fish box
- Six full-length lifting/turning strakes | Rod grippers | Hydraulic steering
- Transom fishbox and storage enclosure with hot box & channel lids
- Transom storage enclosure with two aluminum doors & toe kick
- Rogue tandem axle trailer with disc brakes on both axles

## Pacific CC & Standard Features

- Heavy-duty Alumadrive™ outboard bracket (single on 22', dual on 24'–26')

## Pacific XD Standard Features

- Heavy-duty Alumadrive™ dual outboard bracket

Model Specs	Length	Beam	Beam at Chine	Inside Freeboard	Side Height	Transom Height	Deadrise	Bottom Thickness	Side Thickness	Persons/ Capacity	Approx. Weight	Weight Capacity	Fuel Capacity	Max HP Prop/Jet
22' CC	24' 3"	101"	82"	29"	33"	25"	18°	0.190	0.125	8/1,200 lbs	2,200 lbs	1,800 lbs	60 Gal	250 HP
24' CC	26' 3"	101"	82"	29"	33"	25"/30"	18°	0.250	0.160	8/1,200 lbs	2,610lbs	1,800 lbs	80 Gal	400 HP
26' CC	28' 3"	101"	82"	29"	33"	25"/30"	18°	0.250	0.160	9/1,350 lbs	2,970 lbs	2,400 lbs	120 Gal	500 HP
24' XD	26' 5"	101"	82"	31"	36"	30"/25"	18°	0.250	0.160	8/1,200 lbs	2,500 lbs	1,800 lbs	80 Gal	400 HP
26' XD	28' 5"	101"	82"	31"	36"	30"/25"	18°	0.250	0.160	9/1,350 lbs	2,800 lbs	2,400 lbs	120 Gal	500 HP

Photos may show options not included in package pricing. **Prices and specifications are subject to change.**

**stevensmarine.com | ALUMAWELD 9**

# TALON



18' **\$46,975** Mercury 60 CT EFI

## Standard Features

- (2) Deluxe comfort seats on aluminum storage boxes | Deluxe dash panel with 5-switch control
- Welded walk-through windshield with aluminum lower door
- Three-bow black canvas custom top with side curtains, back drop & boot | Transom tray with hot box
- Starboard wiper | Welded aluminum glove box with locking door
- Under-console storage tray (port side) | Swim step with tie-down eyes
- Two bolt-on transducer brackets | Galvanized single axle trailer



Model Specs	Length	Beam	Beam at Chine	Inside Freeboard	Side Height	Transom Height	Deadrise	Bottom Thickness	Side Thickness	Persons/ Capacity	Approx. Weight	Weight Capacity	Fuel Capacity	Max HP Prop/Jet
18'	20' 1"	89"	72"	27.5"	29"	25"	14°	0.160	0.125	5/750 lbs	1,350 lbs	1,500 lbs	38 Gal	115/80 HP

# STRYKER SPORT



**Starting at**  
**\$465**  
Per Month OAC

20'	<b>\$55,350</b>	Mercury 115 CT EFI
22'	<b>\$61,440</b>	Mercury 115 CT EFI

## Standard Features

- (2) Deluxe comfort seats on aluminum storage boxes | Deluxe dash panel with 5-switch control
- Mechanical steering | Self-bailing step deck with welded aluminum storage
- Extra-wide transom tray with hot box | Under-console storage with three locking compartments
- Three-bow canvas top with side curtains, back drop & boot
- Walk-through windshield with starboard wiper | Two bolt-on transducer brackets
- Rogue trailer (swing-away tongue on 20', tandem axle w/ brakes on 22')



Model Specs	Length	Beam	Beam at Chine	Inside Freeboard	Side Height	Transom Height	Deadrise	Bottom Thickness	Side Thickness	Persons/Capacity	Approx. Weight	Weight Capacity	Fuel Capacity	Max HP Prop/Jet
20'	20' 3"	89"	72"	30.25"	33.5"	25"	14°	0.190	0.125	5/750 lbs	1,550 lbs	1,500 lbs	38 Gal	150/105 HP
22'	22' 3"	89"	72"	30.25"	33.5"	25"	14°	0.190	0.125	6/900 lbs	1,715 lbs	1,900 lbs	45 Gal	200/140 HP

Photos may show options not included in package pricing. **Prices and specifications are subject to change.**

**stevensmarine.com | ALUMAWELD 11**

# STRYKER X

**Starting at**  
**\$465**  
**Per Month OAC**

20' **\$62,860** Mercury 115 CT EFI  
22' **\$73,200** Mercury 150 EFI



## Standard Features

- (2) Deluxe comfort seats on aluminum storage boxes | Hydraulic steering
- Under-console storage with three locking compartments
- Welded bow fish box with locking lid & aft deck fish box with hot box
- Welded aluminum glove box with door | Hydraulic steering
- Three-bow canvas top with side curtains, back drop & boot
- Walk-through windshield with starboard wiper | Two bolt-on transducer brackets
- Single heavy-duty Alumadrive™ outboard bracket
- Trolling motor bracket
- Rogue trailer (swing-away tongue on 20', tandem axle w/ brakes on 22')

Model Specs	Length	Beam	Beam at Chine	Inside Freeboard	Side Height	Transom Height	Deadrise	Bottom Thickness	Side Thickness	Persons/ Capacity	Approx. Weight	Weight Capacity	Fuel Capacity	Max HP Prop/Jet
20'	22' 3"	89"	72"	29.75"	33.5"	25"	18°	0.190	0.125	6/900 lbs	1,685 lbs	1,700 lbs	38 Gal	150 HP
22'	24' 3"	89"	72"	29.75"	33.5"	25"	18°	0.190	0.125	7/1,050 lbs	1,850 lbs	1,900 lbs	45 Gal	200 HP

# INTRUDER



**Starting at**  
**\$580**  
**Per Month OAC**

20'	<b>\$79,995</b>	Mercury 150 EFI
22'	<b>\$82,850</b>	Mercury 150 EFI
24'	<b>\$87,995</b>	Mercury 150 EFI



## Standard Features

- (2) Deluxe comfort seats on lockable aluminum storage boxes
- (2) bench seats w/ folding backrests on lockable boxes
- Master Fishing Package | Diamond-plate step between consoles
- Walk-through windshield w/ starboard wiper | Alumadrive™ transom w/ drainage & toe kick
- Step-deck storage w/ SouthCo latches | Transom storage enclosure w/ hot box & channel lids
- Welded bow rails | Hydraulic steering | Two bolt-on transducer brackets
- Rogue tandem axle trailer with disc brakes (swing-away tongue on 20')
- Master Fishing Package

Model Specs	Length	Beam	Beam at Chine	Inside Freeboard	Side Height	Transom Height	Deadrise	Bottom Thickness	Side Thickness	Persons/Capacity	Approx. Weight	Weight Capacity	Fuel Capacity	Max HP Prop/Jet
20'	22' 9"	99.5"	82"	29"	33"	25"	18°	0.190	0.125	6/900 lbs	2,295 lbs	1,700 lbs	60 Gal	200 HP
22'	24' 9"	99.5"	82"	29"	33"	25"	18°	0.190	0.125	8/1,200 lbs	2,475 lbs	1,900 lbs	60 Gal	225 HP
24'	26' 9"	99.5"	82"	29"	33"	30"/25"	18°	0.250	0.160	9/1,350 lbs	2,665 lbs	2,400 lbs	80 Gal	250 HP

Photos may show options not included in package pricing. **Prices and specifications are subject to change.**

**stevensmarine.com | ALUMAWELD 13**

# FORMULA VEE



**Starting at**  
**\$627**  
**Per Month OAC**

24' **\$89,395** Mercury 150 EFI

26' **\$101,995** Mercury 200 EFI

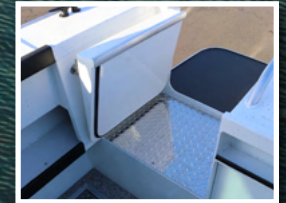


## Standard Features

- (2) Deluxe comfort seats on lockable aluminum storage boxes
- Self-bailing step deck with integrated fish box & between-console step storage
- Dual transom fish boxes with lids and hot box | Welded aluminum glove box with locking door
- Welded walk-through windshield with lower walk-through door
- Three-bow stainless top with side curtains & back drop | Hydraulic steering
- Six full-length lifting/turning strakes | Starboard wiper | Two bolt-on transducer brackets
- Heavy-duty dual Alumadrive™ bracket | Rogue tandem axle trailer with disc brakes

Model Specs	Length	Beam	Beam at Chine	Inside Freeboard	Side Height	Transom Height	Deadrise	Bottom Thickness	Side Thickness	Transom Thickness	Persons/Capacity	Approx. Weight	Weight Capacity	Fuel Capacity	Max HP Prop/Jet
24'	26' 5"	101"	82"	31"	36"	30"/25"	18°	0.250	0.160	0.250	9/1,350 lbs	2,960 lbs	2,400 lbs	80 Gal	400 HP
26'	28' 5"	101"	82"	31"	36"	30"/25"	18°	0.250	0.125	0.250	9/1,350 lbs	3,210 lbs	2,400 lbs	120 Gal	500 HP

# HORIZON



**Starting at**  
**\$766**  
**Per Month OAC**

24'	<b>\$107,995</b>	Mercury 150 EFI
26'	<b>\$119,995</b>	Mercury 200 EFI
28'	<b>\$123,995</b>	Mercury 200 EFI



## Standard Features

- Guide seats on aluminum boxes
- (2) bench seats w/ folding backrests on lockable boxes
- Hardtop with sliding windows, top hand rails, deck light & drop curtain
- Forward compartment storage & floor storage | Transom fish box with walk-through
- Heavy-duty dual Alumadrive™ bracket
- Welded offshore bow rails & heavy-duty rubrails
- Welded walk-through windshield with starboard wiper
- Six full-length lifting/turning strakes | Two bolt-on transducer brackets
- Rogue tandem axle trailer with disc brakes

Model Specs	Length	Beam	Beam at Chine	Inside Freeboard	Side Height	Transom Height	Deadrise	Bottom Thickness	Side Thickness	Persons/Capacity	Approx. Weight	Weight Capacity	Fuel Capacity	Max HP Prop/Jet
24'	26' 10"	101"	82"	31"	36"	30"/25"	18°	0.250	0.160	9/1,350 lbs	3,450 lbs	2,400 lbs	80 Gal	300 HP
26'	28' 10"	101"	82"	31"	36"	30"/25"	18°	0.250	0.160	9/1,350 lbs	3,850 lbs	2,400 lbs	80 Gal	400 HP
28'	30' 10"	101"	82"	31"	36"	30"/25"	18°	0.250	0.160	9/1,350 lbs	4,200 lbs	2,400 lbs	120 Gal	500 HP

Photos may show options not included in package pricing. **Prices and specifications are subject to change.**

**stevensmarine.com | ALUMAWELD 15**

# **KINGFISHER** | Since 1959

Precision. Strength. Reliability.



For over six decades, KingFisher has been building rugged, hand-crafted welded aluminum boats designed to deliver unmatched strength and control. With Pre-Flex® hull technology, innovative styling, and uncompromising performance, KingFisher boats are trusted by anglers and families seeking reliability and adventure on every outing.

*“Unmatched strength and performance on the water since 1959.”*

## **Signature Features – Standard on Every KingFisher**

- Pre-Flex® Hull Technology
- All-Welded Heavy-Gauge Aluminum Construction
- Full-Side Paint with Zolatone Interior
- Integrated Full-Width Motor Bracket with Platform
- Dual USB Port and 12-Volt Outlet
- Navigation Light Package
- Heavy-Duty Offshore Bow & Transom Bracing
- Reinforced Keel Guard
- Premium Welded Windshield
- Precision Welded Cabin & Deck Structure



*KingFisher – Engineered for Strength. Trusted Worldwide.*

# FALCON



**Starting at**  
**\$399**  
Per Month OAC

1825	<b>\$44,995</b>	Mercury 60 CT EFI
2025	<b>\$54,650</b>	Mercury 115 CT EFI



1825 Falcon

## Standard Features

- (2) Fishmaster XL seats on pedestals | Welded bow & stern eyes with heavy-duty keel guard
- Painted bow rub rail extrusion | Walk-through windshield with wiper
- Back drop curtain, top & sides | Rigid full-length compound angle box stringers
- Passenger grab handle
- Rod storage for (6) rods | Diamond-plate anti-scuff kick plates | EZ Loader trailer with brakes

## 1825 Feature Package

- Canvas half top with side curtains and boot cover | Sport helm and steering wheel

## 2025 Feature Package

- HD square-tube canvas half top with side curtains and boot
- Anti-feedback steering and sport steering wheel | Lockable bow storage box

Model Specs	Length	Beam	Side Height	Transom Height	Cockpit	Deadrise	Bottom Thickness	Side Thickness	Approx. Weight	Fuel Capacity	Max HP
1825	18' 6"	88"	31"	20"	121"	12°	0.160	0.125	1,100 lbs	25 Gal	115 HP
2025	20' 6"	92"	34"	25"	146"	16°	0.190	0.125	1,448 lbs	36 Gal	200 HP

Photos may show options not included in package pricing. **Prices and specifications are subject to change.**

**stevensmarine.com | KINGFISHER 17**

# ESCAPE



**Starting at**  
**\$537**  
Per Month OAC

2025 **\$68,775** Mercury 115 CT EFI

## Standard Features

- Transom tackle drawer | Transom fish box | (2) Fishmaster seats on boxes
- Self-bailing recessed bow | Driver side windshield wiper | Hydraulic steering
- Single engine offshore motor bracket Electric bilge pump | Back drop curtain
- Full-width transom platform | Galvanized trailer with brakes and load guides



2025 Escape

Model Specs	Length	Beam	Side Height	Transom Height	Cabin Length	Cabin Headroom	Deadrise	Bottom Thickness	Side Thickness	Approx. Weight	Fuel Capacity	Max HP
2025	20'	96"	35"	25"	90.75"	73"	16°	0.190	0.125	1,750 lbs	60 Gal	225 HP

# ESCAPE HARD TOP



2025	<b>\$77,995</b>	Mercury 115 CT EFI
2225	<b>\$99,850</b>	Mercury 150 EFI
2425	<b>\$108,700</b>	Mercury 150 EFI



## Standard Features

- Transom tackle drawer | Transom fish box | Full-width transom platform
- Galvanized tanam axle trailer with brakes and load guides

## 2025 Hard Top Feature Package

- (2) Fisherman seats on boxes | Sliding side windows
- Upper cabin storage trays | Interior cabin light

## 2225 & 2425 Feature Package

- (2) Rivermaster seats on boxes | Hydraulic steering with stainless wheel | Self-bailing recessed bow
- Back drop curtain (22') | (2) 36" storage bench seats (22')
- Cabin bulkhead & locking door (24') | (2) 42" storage bench seats (24')

Model Specs	Length	Beam	Side Height	Transom Height	Cabin Length	Cabin Headroom	Deadrise	Bottom Thickness	Side Thickness	Approx. Weight	Fuel Capacity	Max HP
2025	20'	96"	35"	25"	90.75"	73"	16°	0.190	0.125	1,930 lbs	60 Gal	225 HP
2225	24'	96"	37"	25"	86"	73"	Variable 16°	0.190	0.125	2,495 lbs	85 Gal	250 HP
2425	26' 11"	102"	37"	25"	91"	74"	Variable 16°	0.190	0.125	3,280 lbs	85 Gal	300 HP

# COASTAL EXPRESS



2325	<b>\$110,580</b>	Mercury 150 EFI
2625	<b>\$136,395</b>	Mercury 225 EFI
2825	<b>\$144,250</b>	Mercury 250 EFI



## Standard Features

- Stainless offshore bow rail | Foul weather bow toe rail | Aluminum anchor roller
- Stainless steel roof rails | Overhead radio shelf | Hydraulic steering with stainless steel wheel
- Cabin bulkhead with locking door | (16) Roof-mounted rod holders
- Trim tabs with dash indicator | Multi-function gauge | Galvanized trailer with brakes and load guides

## 2325 Northwest Package

- (2) 36" storage bench seats | Porta potty in storage bench seat | Porta potty privacy curtain
- Bed conversion kit

## 2625 & 2825 Pacific Package

- (2) 36" storage bench seats | (2) 42" painted storage bench sleeper seats | Flush toilet in bench seat
- Pantographic windshield wipers | (2) Transom-mounted sacrificial anodes

Model Specs	Length	Beam	Side Height	Transom Height	Cabin Length	Cabin Headroom	Deadrise	Bottom Thickness	Side Thickness	Approx. Weight	Fuel Capacity	Max HP
2325	24' 3"	96"	37"	25"	86"	73"	Variable 16°	0.190	0.160	2,660 lbs	85 Gal	250 HP
2625	27'	102"	37"	25"	96"	74"	Variable 16°	0.190	0.160	3,795 lbs	85 Gal	300 HP
2825	29'	102"	37"	25"	96"	74"	Variable 18°	0.190	0.160	3,995 lbs	85 Gal	400 HP

# XAC



**Starting at**  
**\$929**  
**Per Month OAC**

2325	<b>\$118,880</b>	Mercury 150 EFI
2525	<b>\$130,150</b>	Mercury 150 EFI

## Standard Features

- Self-bailing cockpit with scupper drains | Welded full-width transom platform with integrated bracket
- Hydraulic steering with stainless wheel | Heavy-duty offshore motor bracket
- Trim tabs with dash indicators | Cabin bulkhead with locking door | Stainless steel bow rails
- Multi-function gauge | Electric bilge pump | Galvanized tandem axle trailer with brakes and load guides

## Northwest Package

- (2) 36" storage bench seats | (2) Rivermaster seats on boxes | Roof-mounted handrails
- Overhead radio shelf | Cabin interior light | Back drop curtain
- Heavy-duty pantographic windshield wipers | Forward cabin V-berth storage | Portside sliding window
- Anchor roller | Welded bow step



Model Specs	Length	Beam	Side Height	Transom Height	Cabin Length	Cabin Headroom	Deadrise	Bottom Thickness	Side Thickness	Approx. Weight	Fuel Capacity	Max HP
2325	23' 2"	102"	38"	25"	71"	75"	Variable 16°	0.190	0.160	3,303 lbs	85 Gal	250 HP
2625	25' 2"	102"	38"	25"	88"	75"	Variable 16°	0.190	0.160	3,913 lbs	85 Gal	300 HP

# XRS



**Starting at**  
**\$1,592**  
 Per Month OAC

- 2725 **\$203,750** Mercury 250 EFI
- 3025 **\$256,995** Dual Mercury 200 EFI



### Standard Features

- (1) Suspension helm seat with slider | Port-side dinette seating converts to sleeping berth
- Finished cuddy with carpeting and hull liner | XL dash for flush-mounted electronics
- Hatch with screen and dual portholes with screens
- Stand-up enclosed head | Formed compound-angle box stringers (full-length)
- Aluminum overhead radio shelf | Six drink holders
- Fish lockers and raised transom fish locker | Integral aluminum cockpit roof extension
- Black 2.3 cu. ft. DC fridge | Starboard galley
- Aft cockpit KingDeck marine floors and gunnel tops | Galvanized trailer with brakes

Model Specs	Length	Beam	Side Height	Transom Height	Cabin Length	Cabin Headroom	Deadrise	Bottom Thickness	Side Thickness	Approx. Weight	Fuel Capacity	Max HP
2725	27' 11"	102"	38"	25"	99"	74"	Variable 18°	0.250	0.160	4,649 lbs	120 Gal	400 HP
3025	30' 5"	114"	42"	25"	112"	77"	Variable 18°	0.250	0.160	6,198 lbs	200 Gal	500 HP

# GFX



**Starting at**  
**\$2,200**  
Per Month OAC

3025	<b>\$281,580</b>	Dual Mercury 150 EFI
3225	<b>\$349,995</b>	Dual Mercury 200 EFI
3425	<b>\$393,800</b>	Dual Mercury 200 EFI



### Standard Features

- Watertight rear cabin bulkhead | Watertight sliding rear door | Fully welded rub rail/stiffener
- Integrated raised bow coaming | Heavy-duty offshore bow rails
- Stainless interior & exterior hardtop rails | Stainless steel sink & freshwater tank
- Full-width motor bracket with platform | Walk-through transom door
- Self-bailing cockpit with freeing ports | Cockpit fish lockers with discharge pumps | Anchor rope locker
- Tan destination King leather upholstery | Suspension helm and companion seats with sliders
- Dinette seating converts to queen berth | Stand-up enclosed head with flushing toilet
- Hydraulic steering with 3-spoke stainless wheel | Queen V-berth with mattress | Stainless DC fridge
- (2) Floor fish boxes | Side cabin window valances with curtains | Overhead radio shelf
- Galvanized trailer with brakes

Model Specs	Length	Beam	Side Height	Transom Height	Cabin Length	Cabin Headroom	Deadrise	Bottom Thickness	Side Thickness	Approx. Weight	Fuel Capacity	Max HP
3025	30'	114"	46"	25"	116.5"	76"	Variable 18°	0.250	0.160	6,928 lbs	200 Gal	600 HP
3225	32'	120"	46"	25"	126"	82"	Variable 18°	0.250	0.160	8,400 lbs	250 Gal	700 HP
3425	35' 1"	120"	46"	25"	135"	82"	Variable 18°	0.250	0.160	9,510 lbs	300 Gal	900 HP

# **SMOKER** | Since 1903 CRAFT

Performance. Strength. Durability.



Smoker Craft has earned its reputation for excellence from the rugged rivers of Alaska to the vast expanses of the Columbia River. With superior hull designs, reinforced structures, and integrated spray rails, Smoker Craft boats deliver flawless performance season after season. Built to endure, Smoker Craft boats are engineered to run drier, lift higher, and turn outboard horsepower into exceptional performance on the water.

*"The industry standard for durability.."*

## **Signature Features – Standard on Every Smoker Craft**

- **Lifetime hull warranty, plus a 6-year warranty on all components, upholstery, carpet, and electronics.**
- **Covers all parts and labor**
- **Transferable to second owner**



**Smoker Craft — Built to Endure.**

# ALASKAN

**Starting at**  
**\$158**  
Per Month OAC

13' Split Seat Deluxe	<b>\$10,595</b>	Mercury 9.9 EFI
15' Split Seat Deluxe	<b>\$12,475</b>	Mercury 15 EFI
15' Side Console Deluxe	<b>\$15,720</b>	Mercury 15 EFI

## Standard Features

- Walk-thru seat boxes | Portable fuel tank & hose
- Galvanized trailer

## Side Console Deluxe Features

- Electric start | (2) Seats on storage boxes | Bow rails

## Split Seat Deluxe Features

- (3) Seats

## Let's Go Fishing Package

- (3) Rod holders | (3) Life vests | Horn/paddle | Throwable cushion



13' Alaskan DLX SS

Model Specs	Length	Beam	Depth	Interior Depth	Max Persons	Dry Weight	Fuel Capacity	Max HP Prop/Jet
13' DLX	12' 11"	66"	26"	20"	3	225 lbs	Portable	20 HP
15' DLX/SC	14' 11"	68"	27"	21"	4	270 lbs	Portable	35 HP

# PRO LODGE



**Starting at**  
**\$226**  
Per Month OAC

16'	<b>\$24,385</b>	Mercury 25 EFI
16' SC	<b>\$30,075</b>	Mercury 40 EFI



## Standard Features

- (3) Seats, (2) on storage boxes | Bow livewell/fishbox
- Bow storage compartment
- Built-in fuel tank | Electric start | Navigation lights | Bilge pump
- Galvanized trailer
- Side load guides | Swing tongue

## Side Console Deluxe Features

- (2) Seats on storage boxes | Trim & tilt

Model Specs	Length	Beam	Interior Depth	Transom Height	Deadrise	Max Persons	Max Capacity	Fuel Capacity	Max HP Prop/Jet
160	16' 6"	82"	24"	20"	10°	6	815 lbs	12 Gal	60 HP

# FREEDOM



160 **\$24,920** Mercury 25 EFI  
 180 **\$33,615** Mercury 50 EFI

## Standard Features

- (2) Deluxe seats on pedestals | Livewell/Fish box
- Locking rod storage
- Tiller steering | Electric start | Power trim & tilt (18')
- Navigation lights | Bilge pump
- Galvanized trailer | Side load guides | Swing tongue



Model Specs	Length	Beam	Side Gauge	Bottom Gauge	Interior Depth	Transom Height	Deadrise	Max Persons	Dry Weight	Fuel Capacity	Max HP Prop/Jet
160	16' 10"	89"	0.80	0.100	22"	20"	10°	6	975 lbs	17 Gal	75 HP
180	18' 10"	89"	0.80	0.100	2"	20"	10°	6	1,005 lbs	17 Gal	125 HP

New

# VIPER



Starting at  
**\$194**  
Per Month OAC

165 Viper SC	<b>\$23,995</b>	Mercury 40 EFI
175 Viper XR Pro SC	<b>\$28,650</b>	Mercury 60 CT EFI
195 Viper XR Pro SC	<b>\$35,300</b>	Mercury 115 CT EFI
161 Lazer SC	<b>\$26,140</b>	Mercury 40 EFI

## Standard Features

- Heavy-gauge one-piece hull | Vinyl cockpit | 25-gallon bow livewell | Rod Storage | Galvanized trailer

## Viper Standard Features

- One-piece hull bottom | VPS hull | Autotreme console with full complement of gauges
- Large bow & stern casting deck with 18oz carpet
- 3-person bench | Wood-free fishing seats with (2) Seat bases
- 7'6" rod storage (165 & 175) | 8'6" rod storage (195)

## Lazer Standard Features

- Vinyl casting platforms | Trolling motor plug
- (2) color-coordinated fishing seats with (5) seat base positions | Lockable rod storage
- No-feedback rotary steering | Cleats (4) | Fuel gauge | Built-in fuel tank



# LAZER

Model Specs	Length	Beam	Depth	Interior Depth	Transom Width	Dry Weight	Number of Seats	Deadrise	Max Persons	Fuel Capacity	Max HP Prop/Jet
165 Viper SC	16' 6"	84'	TBD	20"	60"	980 lbs	2	11°	4	12 Gal	75 HP
175 Viper XR Pro SC	17' 6"	84'	TBD	20"	60"	1046 lbs	2	11°	4	23 Gal	115 HP
195 Viper XR Pro SC	19' 6"	97"	TBD	19"	20"	1290 lbs	2	11°	4	23 Gal	150 HP
161 Lazer SC	16' 2"	81"	33"	25"	84"	845 lbs	2	10°	5	12 Gal	60 HP

# SPORTSMAN



**Starting at**  
**\$200**  
 Per Month OAC

16	<b>\$21,600</b>	Mercury 25 EFI
18	<b>\$29,275</b>	Mercury 40 EFI
16 Jet	<b>\$25,085</b>	Mercury 60/40 Jet EFI
18 Jet	<b>\$35,485</b>	Mercury 90/65 Jet EFI



## Standard Features

- Rod storage | Bow fish box | Semi-vee bottom | Welded construction
- Tiller steering | Navigation lights | Bilge pump | Galvanized trailer
- Side load guides | Swing tongue

## Guide Seats Pack (Add **\$1,085**)

- (2) Seats on boxes | (1) Seat on 4-legged pedestal

## Pro Package (Add **\$2,280**)

- Top loading locking rod storage port & starboard
- Additional locking storage compartments
- Livewell in-bow fish box

Model Specs	Length	Beam	Interior Depth	Transom Height	Deadrise	Max Persons	Dry Weight	Fuel Capacity	Max HP Prop/Jet
1660	16' 7"	86"	23"	20"	10°	6	800 lbs	17 Gal	70/65 HP
1866	18' 7"	92"	26"	20"	10°	6	825 lbs	28 Gal	90/80 HP

# PRO SPORTSMAN

**Starting at**  
**\$348**  
Per Month OAC

1872	<b>\$43,100</b>	Mercury 60 EFI
2072	<b>\$51,325</b>	Mercury 90 EFI
1872 Jet	<b>\$47,165</b>	Mercury 90/65 Jet EFI
2072 Jet	<b>\$53,445</b>	Mercury 115/80 Jet EFI

## Standard Features

- (2) Seats on storage boxes | In-floor storage
- Bow livewell/fishbox
- Bow anchor storage | Electronics storage | Washdown pump
- 2/3 offset transom box | Hot water sink
- Diamond plate bow guard
- Navigation light | Bilge pump | Galvanized trailer
- Side load guides | Swing tongue



Model Specs	Length	Beam	Interior Depth	Depth	Transom Height	Deadrise	Seats	Max Persons	Dry Weight	Max Capacity	Fuel Capacity	Max HP Prop/Jet
160	18' 6"	99"	27"	33.5"	25"	10°	2	6	1,595 lbs	800 lbs	33 Gal	90/65 HP
180	20' 6"	99"	27"	33.5"	25"	10°	2	6	1,20 lbs	850 lbs	33 Gal	150/105 HP

# PRO TRACER



**Starting at**  
**\$301**  
 Per Month OAC

162    **\$32,560**    Mercury 40 EFI



## Standard Features

- (2) Seats on storage boxes | (2) Rear side jump seats
- Top, side curtains, & back drop
- Bow livewell/fishbox | Bow rails | Bow storage compartment
- Navigation lights | Bilge pump | Galvanized trailer
- Side load guides | Swing tongue

Model Specs	Length	Beam	Interior Depth	Transom Height	Dry Weight	Deadrise	Max Persons	Max Weight	Seats	Fuel Capacity	Max HP Prop
162	16' 6"	82"	24"	20"	1,025 lbs	10°	6	815 lbs	2	12 Gal	90 HP

# OSPREY

**Starting at**  
**\$340**  
**Per Month OAC**



162 **\$36,715** Mercury 50 EFI  
172 **\$41,360** Mercury 60 CT EFI



## Standard Features

- High-back driver & passenger seats | (2) rear side jump seats
- Top, side curtains & back drop
- Bow livewell / fishbox | In-floor fish box | Rod storage | Bow storage compartment
- Bow-mount troller pre-wire | Navigation lights | Galvanized trailer
- Side-load guides
- Swing tongue

Model Specs	Length	Beam	Interior Depth	Transom Height	Deadrise	Seats	Max Persons	Dry Weight	Max Capacity	Fuel Capacity	Max HP Prop
162	16' 4"	90"	27"	20"	17°	2	6	1,075 lbs	765 lbs	20 Gal	115 HP
172	17' 4"	90"	27"	20"	17°	2	6	1,165 lbs	850 lbs	25 Gal	115 HP

# ULTIMA

**Starting at**  
**\$302**  
Per Month OAC



182 **\$51,815** Mercury 90 EFI



## Standard Features

- (2) Seats on posts | Flip-up jump seats
- Top, side curtains, & wind curtain
- Bow livewell / fishbox | Bow storage compartment | Rod storage
- Bow-mount troller pre-wire | Navigation lights | Bilge pump
- Galvanized trailer
- Side-load guides | Swing tongue

Model Specs	Length	Beam	Interior Depth	Transom Height	Deadrise	Max Persons	Dry Weight	Max Capacity	Seats	Fuel Capacity	Max HP Prop
182	18' 2"	96"	27"	25"	17°	8	1,425 lbs	1,100 lbs	3	25 Gal	175 HP

# *SunChaser* | Since 2005

Adventure. Family. Fun.



Life's all about the memories — from pulling the kids on a tube to catching that big fish or enjoying a lakeside lunch. With over 50 models, SunChaser offers the perfect ride for every family. With precision design and premium features like stylish LED lighting, Bluetooth®-enabled stereos, and luxurious seating, SunChaser pontoons bring comfort, performance, and excitement to every outing.

*"Unforgettable memories, built to last."*

## **Signature Features – Standard on Every SunChaser**

- Lifetime hull warranty, plus a 6-year warranty on all components, upholstery, carpet, and electronics.
- Covers all parts and labor
- Transferable to second owner
- Power canopy
- Through-bolted deck cleats
- Lounge arm changing room
- Wet Sounds™ stereo
- Wet Sounds™ speakers
- Woven vinyl Sea Weave flooring
- Rotocast furniture bases
- Windscreen
- 12-volt receptacle



**SunChaser — Built for Fun. Backed for Life.**

# LUCERNE SERIES



**Starting at**  
**\$201**  
Per Month OAC

**LR DH**



**LUCERNE SPORT**

**LR DH**



16 LR DH	<b>\$24,900</b>	Mercury 25 EFI
18 LR DH	<b>\$27,360</b>	Mercury 25 EFI
20 LR DH	<b>\$32,240</b>	Mercury 40 EFI
22 LR DH	<b>\$36,330</b>	Mercury 50 EFI
22 LR DH Sport	<b>\$41,890</b>	Mercury 50 EFI
Single Axle Trailer (16'-20')	<b>\$4,410</b>	
Tandem Axle Trailer (20'-22')	<b>\$7,110</b>	
Tritoon Kit	<b>\$435</b>	

## Standard Features

- 23" tubes | Rotocast corners | Rotocast console | Extreme tilt steering
- Torcello steering wheel | Woven vinyl Sea Weave flooring | Manual bimini top
- Wet Sounds™ MC-5 stereo with Bluetooth® | GPS speedometer | Volt gauge

## SPORT MODE Features

- 25" tube upgrade | PTS center tube | Performance strakes | Skinning | Hydraulic steering
- Ski tow

Model Specs	Length	Beam	Tube Diameter	Person Capacity	Tube Gauge	Capacity Weight	Dry Weight	Fuel Capacity	Max HP
16 LR DH	17'	96"	23"	6	.080"	840 lbs	1,275 lbs	20 Gal	40 HP
18 LR DH	19'	96"	23"	8	.080"	1,075 lbs	1,460 lbs	20 Gal	60 HP
20 LR DH	20' 10"	96"	23"	9	.080"	1,225 lbs	1,875 lbs	20 Gal	90 HP
22 LR DH	22' 10"	96"	23"	9	.080"	1,225 lbs	2,027 lbs	20 Gal	115 HP
22 LR DH Sport	22' 10"	96"	25"	9	.080"	1,225 lbs	2,027 lbs	39 Gal	150 HP

# VISTA SERIES

**Starting at**  
**\$225**  
Per Month OAC

**FISH**

**LR**

**LR**

16 Fish/LR **\$27,895** Mercury 25 EFI

18 Fish/LR **\$29,200** Mercury 25 EFI

20 Fish/LR **\$33,425** Mercury 40 EFI

22 Fish/LR **\$39,350** Mercury 50 EFI

Single Axle Trailer (16'-20') **\$4,410**

Tandem Axle Trailer (20'-22') **\$7,110**

Tritoon Kit **\$435**

## Standard Features

- Bimini top | Bucket helm chair with armrests
- Full Sea Weave flooring | Rotocast furniture bases | Rear-entry boarding ladder
- Through-bolted deck cleats

## FISH FEATURES

- Built-in Livewell



Model Specs	Length	Beam	Transom Height	Tube Diameter	Tube Gauge	Person Capacity	Capacity Weight	Dry Weight	Fuel Capacity	Max HP
16 LR/Fish	17'	96"	20"	23"	.080"	6	840 lbs	1,275 lbs	20 Gal	40 HP
18 LR/Fish	19'	96"	20"	23"	.080"	8	1,075 lbs	1,460 lbs	20 Gal	60 HP
20 LR/Fish	20' 10"	96"	20"	23"	.080"	9	1,210 lbs	1,875 lbs	20 Gal	90 HP
22 LR/Fish	22' 10"	96"	20"	23"	.080"	9	1,225 lbs	2,027 lbs	20 Gal	115 HP

# GENEVA SERIES

4.0 FISH



**Starting at**  
**\$336**  
Per Month OAC



**CRUISE**



**FISH**

20 DS | Crusie | Fish | 4.0 **\$41,575** Mercury 60 CT EFI

22 DS | Crusie | Fish | 4.0 **\$48,330** Mercury 60 CT EFI

24 DS | Crusie | Fish | 4.0 **\$52,950** Mercury 50 CT EFI

Tandem Axle Trailer (20'-24') **\$7,110**

Tritoon Kit **\$435**

## Standard Features

- Bucket helm chair with swivel, slide and armrests | Console door
- Docking lights | Full-height aluminum side panels
- Gauge package (speedometer, tachometer, fuel, volt meter)
- Trailering legs | Stainless-steel 4-step ladder | Table with cupholders
- Fuel Tank

## Fish & 4.0 Features

- Built-in aerated livewell



Model Specs	Length	Beam	Tube Diameter	Tube Gauge	Person Capacity	Capacity Weight	Dry Weight	Fuel Capacity	Max HP w/ Third Tube	Max HP
20	20' 10"	102"	25"	.090"	9	1,315 lbs	2,155 lbs	20 Gal	200 HP	125 HP
22	22' 10"	102"	25"	.090"	10	1,395 lbs	2,585 lbs	38 Gal	250 HP	150 HP
24'	24' 10"	102"	25"	.090"	12	1,775 lbs	2,700 lbs	38 Gal	300 HP	150 HP

# GENEVA SERIES



**Starting at**  
**\$336**  
Per Month OAC

**LR DH**



**LR PSB**



**DS**

20 LR DH | LR PSB | DS **\$41,575** Mercury 60 CT EFI

22 LR DH | LR PSB | DS **\$48,330** Mercury 60 CT EFI

24 LR DH | LR PSB | DS **\$52,950** Mercury 60 CT EFI

Tandem Axle Trailer (20'-22') **\$7,110**

Tritoon Kit **\$435**

## Standard Features

- Bucket helm chair with swivel, slide and armrests | Console door
- Docking lights | Full-height aluminum side panels
- Gauge package (speedometer, tachometer, fuel, volt meter)
- Trailering legs | Stainless-steel 4-step ladder | Table with cupholders



Model Specs	Length	Beam	Tube Diameter	Tube Gauge	Person Capacity	Capacity Weight	Dry Weight	Fuel Capacity	Max HP w/ Third Tube	Max HP
20	20' 10"	102"	25"	.090"	9	1,315 lbs	2,155 lbs	20 Gal	200 HP	125 HP
22	22' 10"	102"	25"	.090"	10	1,395 lbs	2,585 lbs	38 Gal	250 HP	150 HP
24'	24' 10"	102"	25"	.090"	12	1,775 lbs	2,700 lbs	38 Gal	300 HP	150 HP

# GENEVA SPORTS SERIES

**Starting at**  
**\$408**  
Per Month OAC

**SB**

**LR DH**

**LR DH**

21 Sport LR DH   LR PSB   Fish	<b>\$50,450</b>	Mercury 60 CT EFI
21 Sport SB DH	<b>\$51,895</b>	Mercury 60 CT EFI
Tandem Axle Trailer (20'-22')	<b>\$7,110</b>	
Tritoon Kit	<b>\$435</b>	

## Standard Features

- X-Treme PR25 Performance Package | Console door
- Deluxe deck-mounted ski tow | Docking lights | Extended rear deck
- Extruded sealed performance strakes
- Full "Heavy Hat" understructure • Full-height aluminum side panels
- Gauge package (speedometer, tachometer, fuel, volt meter)
- High-back helm chair with swivel, slide and armrests
- Wet Sounds™ MC-5 stereo upgrade | Seastar™ hydraulic steering
- Stainless-steel 4-step ladder | Table with cupholders | Trailering legs

## FISH FEATURES

- Built-in Livewell



Model Specs	Length	Beam	Tube Diameter	Tube Gauge	Person Capacity	Capacity Weight	Dry Weight	Fuel Capacity	Max HP w/ Third Tube	Max HP
21	21' 8"	102"	25"	.100"	11	1,500 lbs	2,875 lbs	40 Gal	200 HP	200 HP

# GENEVA SPORTS SERIES



**Starting at**  
**\$450**  
Per Month OAC

**FISH**

**SB**



**LR PSB**



23 Sport LR DH   LR PSB	<b>\$55,660</b>	Mercury 50 CT EFI
23 Sport SB DH   LR PSB	<b>\$57,100</b>	Mercury 60 CT EFI
25 Sport SB DH   LR DH   LR PSB	<b>\$61,375</b>	Mercury 60 CT EFI
Tandem Axle Trailer (20'-22')	<b>\$7,110</b>	
Tritoon Kit	<b>\$435</b>	

## Standard Features

- X-Treme PR25 Performance Package | Console door
- Deluxe deck-mounted ski tow | Docking lights | Extended rear deck
- Extruded sealed performance strakes | Full "Heavy Hat" understructure
- Full-height aluminum side panels
- Gauge package (speedometer, tachometer, fuel, volt meter)
- High-back helm chair with swivel, slide and armrests
- Wet Sounds™ MC-5 stereo upgrade | Seastar™ hydraulic steering
- Stainless-steel 4-step ladder | Table with cupholders | Trailering legs

## FISH FEATURES

- Built-in Livewell



Model Specs	Length	Beam	Tube Diameter	Tube Gauge	Person Capacity	Capacity Weight	Dry Weight	Fuel Capacity	Max HP w/ Third Tube	Max HP
23	23' 8"	102"	25"	.100"	12	1,640 lbs	2,380 lbs	40 Gal	250 HP	250 HP
25	25' 8"	102"	25"	0.100"	13	1,835 lbs	3,150 lbs	60 Gal	300 HP	300 HP

# ECLIPSE SERIES



**Starting at**  
**\$530**  
Per Month OAC

**LR DH**

**SSB**



**SBX**



23 LR DH | SSB | SSB DH **\$65,600** Mercury 60 CT EFI

25 SBX DH BAR | BAR **\$69,850** Mercury 60 CT EFI

25 SSB | LR DH | SSB DH **\$67,800** Mercury 60 CT EFI

Tandem Axle Trailer (20'-22') **\$7,110**

Tritoon Kit **\$435**

## Standard Features

- X-Treme PR25 Performance Package | Console door | Docking lights
- Extended rear deck | Extruded sealed performance strakes
- Full "Heavy Hat" understructure | Full-height aluminum side panels
- Gauge package (speedometer, tachometer, fuel, volt meter)
- High-back helm chair with swivel, slide and armrests
- Integrated ski tow in exterior rail | Wet Sounds™ MC-2 stereo upgrade
- Seastar™ hydraulic steering | Stainless-steel 4-step ladder | Table with cupholders
- Trim gauge | 42-ml vinyl upholstery



Model Specs	Length	Beam	Tube Diameter	Tube Gauge	Person Capacity	Capacity Weight	Dry Weight	Fuel Capacity	Max HP w/ Third Tube	Max HP
23	24' 8"	102"	25"	.100"	12	1,695 lbs	3,185 lbs	60 Gal	300 HP	300 HP
25	26' 8"	102"	25"	.100"	14	1,975 lbs	3,250 lbs	60 Gal	350 HP	350 HP

# **STARCRAFT** | Since 1903

Innovation. Craftsmanship. Trust.



For over 120 years, Starcraft has been a leader in the boating industry, setting the standard for quality, innovation, and craftsmanship. Built without compromise, every Starcraft boat combines comfort, performance, and reliability. Each boat is still largely handcrafted, blending cutting-edge technology with time-honored craftsmanship to deliver unmatched customer satisfaction.

*"120 years of innovation, craftsmanship, and trust."*

## **Signature Features – Standard on Every SunChaser**

- **Lifetime hull warranty, plus a 6-year warranty on all components, upholstery, carpet, and electronics.\***
  - **Covers all parts and labor**
  - **Transferable to second owner**
- \*Some exceptions apply



Starcraft – Innovation Backed by Tradition.

## SVX 171 OB



## SVX 191 OB



171 OB      **\$42,680**      Mercury 115 CT EFI

191 OB      **\$46,960**      Mercury 115 CT EFI

### STANDARD FEATURES

- Premium helm seat w/ flip-up bolster | Bimini top & storage boot
- AM/FM stereo w/ Bluetooth & (4) speakers | Cupholders
- Hydraulic steering \* | Gauge package | Stainless steel bow rails
- Bow platform w/ boarding ladder | (4) Mooring cleats | Courtesy lights
- In-floor ski storage | Automatic bilge pump
- Bow & stern EvA soft touch traction mat | Trailmaster tandem axle trailer

*\*Hydraulic steering not included on SVX 171 OB*



Model Specs	Length	Beam	Transom Width	Transom Height	Dedrise	Person Capacity	Capacity Weight	Dry Weight	Fuel Capacity	Max HP
171 OB	17' 4"	102"	93"	20"	14°	10	1,400 lbs	2,320 lbs	32 Gal	115 HP
191 OB	18' 11"	102"	93"	20"	14°	12	1,600 lbs	2,575 lbs	45 Gal	175 HP
190 DC OB	18' 11"	102"	93"	20"	14°	12	1,600 lbs	2,685 lbs	48 Gal	175 HP

## SVX 210 DC OB



**Starting at**  
**\$515**  
Per Month OAC

## SVX 211 OB



## SVX 231 OB



211 DC OB	<b>\$63,715</b>	Mercury 115 CT EFI
211 OB	<b>\$63,715</b>	Mercury 115 CT EFI
231 OB	<b>\$64,995</b>	Mercury 115 CT EFI

### STANDARD FEATURES

- Premium helm seat w/ flip-up bolster | Bimini top & storage boot
- AM/FM stereo w/ Bluetooth & (4) speakers | Cupholders
- Hydraulic steering | Gauge package | Stainless steel bow rails
- Bow platform w/ boarding ladder | (4) Mooring cleats | Courtesy lights
- In-floor ski storage | Automatic bilge pump
- Bow & stern EVA soft touch traction mat | Trailmaster tandem axle trailer



Model Specs	Length	Beam	Transom Height	Transom Width	Deadrise	Person Capacity	Capacity Weight	Dry Weight	Fuel Capacity	Max HP
210 DC OB	20' 9"	102"	25"	93"	14°	14	1,875 lbs	2,890 lbs	45 Gal	200 HP
211 OB	20' 9"	102"	25"	93"	14°	14	1,875 lbs	2805 lbs	45 Gal	200 HP
231 OB	22' 8"	102"	25"	93"	14°	14	1,900 lbs	3,300 lbs	60 Gal	300 HP

# TRAILERS

## EZ LOADER



### FEATURES

- Galvanized to resist rust and increase longevity
- Bunks provide optimum bottom support
- Properly designed to balance the load for easy towing
- Infinitely adjustable
- Fits boats precisely for easy loading and launching
- Oil bath hubs for easy and proper bearing lubrication

## KARAVAN Pontoon Trailers

### Features

- Swaycontrol™ Engineering
- Adjustable axle for optimal tongue weight
- Attractive and durable
- Winch stand ladder
- High reliability shortfree™ lighting system
- Sure-lube wheel bearing grease system
- Coated self-coiling safety cables
- Tongue jack included



## ROGUE TRAILERS



### FEATURES

- All-welded, galvanized steel channel construction
- Durawood™ bunks and UHMW side load guides make loading & launching easy
- Swing Tongue included (21' & under)
- Trailer Buddy™ axles assure best ride and towing
- Torque Flex axles for smooth ride
- Resists rust and corrosion
- Radial tires
- LED lights

EZ LOADER MODEL	Boat Length	Capacity	Tire Size	Price	Brakes Axle 1	Brakes Axle 2
Single Axle						
58BT 12-14	12'-14'	1,000 LBS	12"	\$1,355	-	-
67BT 12-14	12'-14'	1,200 LBS	12"	\$1,595	-	-
68BT 14-17	14'-17'	1,250 LBS	13"	\$2,060	-	-
90BT 14-18	14'-18'	2,300 LBS	13"	\$3,045	-	-
96BT 16-20	16'-20'	2,350 LBS	13"	\$3,410	\$4,345	-
96BT 16-20	16'-20'	2,800 LBS	14"	\$3,440	\$4,380	-
102BT 16-20	16'-20'	2,800 LBS	14"	\$3,540	\$4,480	-
102BT 19-22	19'-22'	3,100 LBS	14"	\$3,785	\$4,725	-
Tandem Axle						
T90BT 17-20	17'-20'	4,400 LBS	14"	\$5,005	\$5,945	\$6,500
T96BT 23-25	23'-25'	5,800 LBS	14"	\$7,995	\$8,935	\$9,029
T102BT 23-25	23'-25'	7,500 LBS	15"	\$8,090	\$9,030	\$9,535
KARAVAN MODEL	Boat Length	Capacity	Tire Size	Price	Tri Toon Kit	
Single Axle						
KDP-1415-22	14'-15'	2,200 LBS	13"	\$3,330	-	-
KDP-1618-26	16'-18'	2,600 LBS	13"	\$4,410	-	-
KDP-1822-27-ST	18'-22'	2,700 LBS	13"	\$3,945	-	\$405
Tandem Axle						
KDPT-1822-45-TDB	18'-22'	4,500 LBS	13"	\$6,660	-	\$405
KDPT-2225-45-TDB	22'-25'	4,500 LBS	13"	\$7,110	-	\$435
KDPT-2628-50-TDB	26'-28'	5,000 LBS	13"	\$7,395	-	\$945
KDPT-2528-65-TDB	25'-28'	6,500 LBS	13"	\$11,030	-	\$945
ROGUE MODEL	Boat Length	Capacity	Tire Size	Price	Axle Brakes 1	Brakes 2
Single Axle						
RS-18-66-2300	18'	2,300 LBS	15"	\$6,645	\$7,919	-
RS-18-72-2800	18'	2,800 LBS	15"	\$6,645	\$7,919	-
RS-20-66-2800	20'	2,800 LBS	15"	\$6,750	\$8,025	-
RS-20-72-2800	20'	2,800 LBS	15"	\$6,995	\$8,270	-
RS-20-72-3700	20'	3,700 LBS	15"	\$7,200	\$8,475	-
Tandem Axle						
RT-20-72-4000	20'	4,000 LBS	14"	\$8,160	\$9,435	\$9,890
RT-20-82-4000	20'	4,000 LBS	14"	\$8,635	\$9,910	\$10,370
RT-21-82-4000	21'	4,000 LBS	14"	\$8,885	\$10,160	\$10,615
RT-22-72-4000	22'	4,000 LBS	14"	\$8,875	\$10,150	\$10,610
RT-22-82-4000	22'	4,000 LBS	14"	\$9,360	\$10,635	\$11,090
RT-22-82-4000 HD	22'	4,000 LBS	14"	\$12,485	-	INC
RT-23-82-4000	23'	4,000 LBS	14"	\$9,525	\$10,800	\$11,260
RT-24-82-4000	24'	4,000 LBS	14"	\$10,345	\$11,620	\$12,075
RT-24-82-5500 HD	24'	5,500 LBS	15"	\$13,710	-	INC
RT-25-82-4000	25'	4,000 LBS	14"	\$10,575	\$11,850	\$12,310
RT-26-82-5500C HD	26'	5,500 LBS	15"	\$14,660	-	INC
RT-28-82-5500C HD	26'	5,500 LBS	15"	\$15,035	-	INC

# **STEVENS** | **Parts & Service** **MARINE**

Trusted Parts. Expert Service.

Whether you're upgrading electronics, re-powering your boat, or adjusting your trailer, Stevens Marine's rigging shop is ready to meet all your boating needs. From repairs to custom fabrication, our skilled team turns each project into a functional masterpiece — built tough, ready for anything.

**Featuring Top Brands:** Folbe, Fish Fighter, Garmin, Humminbird, Lowrance, Minn Kota, Scotty, and more.



Fish Fighter  
Seat Backpack



Ultrix Quest



Ace Line Hauler



Lowrance Active Target 2

## Our Services

- Diagnostics
- Boat Maintenance & Repairs
- Engine Maintenance & Repairs
- Electronics Installation

- Fabrication
- Rigging
- Repowers
- Winterization



Stevens Marine — Trusted Parts. Expert Service



Fish Fighter Products is driven by a passion to innovate and craft the finest “big fish” fishing gear in the industry. From creative fishing tools to innovative accessories, they excel at what they do because they’re dedicated heavy water anglers themselves. When they spot a need, they rise to the challenge by designing the toughest, most durable products to meet it – built for hardcore anglers chasing big fish in even the harshest conditions.

Fish Fighter is renowned for its **Sliding Rail System (SRS)**, a versatile range of products that lets you effortlessly adjust the position of rod holders, tackle trays, and other accessories. Customize your boat to suit your exact needs and make every fishing trip more efficient.



Puck and Pin



Extreme Duty XD



River Anchor



Rope Bag



Kwik-Pull™

### Quick Mount™

Model	Price
Puck and Pin	<b>\$98</b>
Anchor Nest Mount	<b>\$123</b>

### Bow Mount Anchor Nest

Model	Price
Extreme Duty XD	<b>\$374</b>

### Breakaway Anchors River Edition

Size	Price
26 lb	<b>\$221</b>
32 lb	<b>\$262</b>

### Folding Anchors

26 lbs	<b>\$249</b>
32 lbs	<b>\$290</b>

Model	Price
Floating Anchor Rope Bag	<b>\$90</b>

Model	Price
Kwik-Pull™ Anchor Retrieval	<b>\$116</b>



Universal



Sliding Block



Quick Release™



SRS™ Flat



4"

14"



8"x14"

14"x12"

### Sliders

Model	Price
Universal Rail	<b>\$53</b>
Universal Tray	<b>\$53</b>
Alumaweld	<b>\$61</b>
Rail System Sliding Block	<b>\$59</b>
Quick Release™ System Base	<b>\$42</b>

### SRS™ Flat Surface Mount

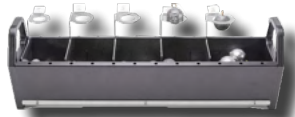
Size	Price
24"	<b>\$68</b>
36"	<b>\$82</b>
72"	<b>\$135</b>

### QRS Rod Riser

Size	Price
4"	<b>\$82</b>
8"	<b>\$95</b>
14"	<b>\$122</b>
24"	<b>\$162</b>
4"x8"	<b>\$121</b>
7"x8"	<b>\$122</b>
8"x14"	<b>\$135</b>
14"x7"	<b>\$135</b>
14"x12"	<b>\$135</b>



Utility Tray



Sinker Tray



Wall Mount



Rod Rack



Sonar Transducer



### Sportsman's Utility Tray

Size	Price
4"x16"	\$69
5.5"x16"	\$77
8"x16"	\$95

### Relentless Series™ Sinker and Tackle Trays

Model	Size	Price
Angled Sinker Tray	4"x16"	\$91
Sinker Tray	4"x16"	\$111
Angled Tackle Tray	4"x16"	\$125
Tackle Tray	4"x16"	\$139

### Wall Mount Rack

Model	Price
6 Rod Holder	\$44
Offshore	\$52
S&C Rod Rack	\$131

Model	Price
Live Sonar Transducer	\$580
Mini Puck & Pin	\$71



Fillet Table



Fish Mat



Bait Tray



Knife Tray



Tackle Tender



Net Holder



Backpack

### Fillet Table

Model	Price
Small	\$269
Large	\$309
Fillet Away Fish Mat	\$40

Model	Price
Bait Tray w/ Plug Cutter	\$194
Knife Storage Tray	\$41

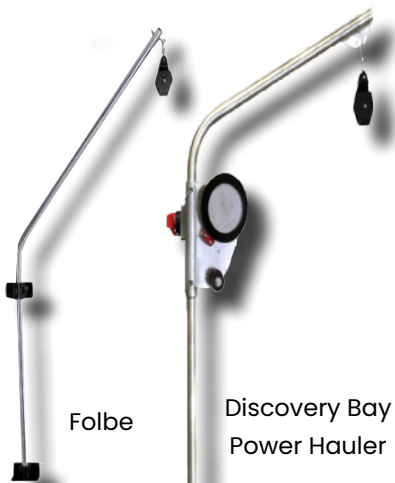
### Tender

Model	Price
Rod	\$63
Tackle	\$121

### Net Holder Mount

Model	Price
Top	\$87
Universal	\$75

Model	Price
Boat Seat Backpack	\$131
Seat Swivel Base	\$155



Folbe

Discovery Bay  
Power Hauler

### Crab Davits

Brand	Model	Price
Folbe	Crab Davit	\$440
Discover Bay	Power Hauler HD923 Power Reel	\$1,596
Ace	Pro Line Hauler	\$799



Anchor Nest

### Anchor Nests

Brand	Model	Price
Leelock	Can System	\$395
Leelock	Anchor Nest	\$280
Miller Marine	Anchor Locker	\$270
Anchor Caddie	Pro Anchor	\$350



Ace Pro  
Line Hauler

### Power Downriggers

Brand	Model	Price
Cannon	Magnum 10	\$700
Cannon	Optimum	\$1,700
Scotty	Depth Power 1101	\$889
Scotty	Depth Power 1106	\$980



Cannon Optimum  
Power Downriggers



### Columbia River Anchor System

Brand	Model	Price
EZ Marine	Deluxe System 26lbs	\$499



EZ Marine



(Apron only)

### Crabbing Accessories

Brand	Model	Price
Haxton's	Crab Apron	\$290



Washdown  
System Kit

Brand	Model	Price
Jabsco	Washdown System Kits	\$309

Jabsco	5.2 Washdown System Kits	\$456
--------	--------------------------------	-------



LED Lights

### Blackhawk Lights

Model	Size	Price
LED Lights	12"	\$32
LED Lights	21"	\$42
LED Lights	41"	\$55



Rod Holder



GM650 Mount



Cutting Board



Prop Saver



Folbe

### Burnewiin

Model	Price
HR3740 Rod Holder	\$70
HR5710 Rod Holder	\$75
RH6650 Rod Holder	\$145
CM300 Side Mount	\$60
GM400 Mount	\$55
GM650 Mount	\$165
KN5690 Ocean Knife 7"	\$130
CB5420 Cutting Board	\$675

### Mac's

Size	Price
Prop Saver	\$148+

### Folbe

Model	Price
Advantage JR	\$55
Advantage	\$58



Scotty



D Size Short



12 V 100AH Battery



Charger BPC-1520C

### Scotty

Model	Price
Rod Extender	\$22
Power Lock	\$36
Striker	\$74
Rod Rack	\$131

### RAM Electronics Mount

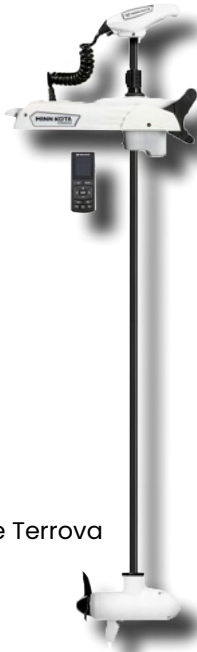
Model	Price
Universal B Short	\$44
Universal C Short	\$67
Universal D Short	\$144
Large D Long	\$201

### Bioenno Power® Batteries

Model	Price
12V 100AH LFP	\$650
24V 50AH LFP	\$600
36V 50AH LFP	\$950
BPC-1520C	\$100
BPC-2410C	\$100
BPC-3608A	\$90



Terrova



Riptide Terrova



Riptide Instinct Quest

## BOW MOUNT

### FRESHWATER TROLLING MOTOR

#### TERROVA

Built-In Sonar/No Foot Pedal

Size	Voltage	Price
60"	24V 80lb	<b>\$2,100</b>

### SALTWATER TROLLING MOTOR

#### Riptide Terrova

Size	Voltage	Price
60"	24V 80lb	<b>\$2,900</b>
60"	36V 112lb	<b>\$3,100</b>
72"	24V 80lb	<b>\$3,200</b>
72"	36V 112lb	<b>\$3,400</b>

## BOW MOUNT

#### RIPTIDE INSTINCT Quest 90/115

Size	Voltage	Price
60"	24V/36V	<b>\$4,700</b>
72"	24V/36V	<b>\$5,000</b>
87"	24V/36V	<b>\$5,750</b>
100"	24V/36V	<b>\$6,400</b>



Riptide Transom



Riptide Transom



Precision Charger

## TRANSOM MOUNT

#### RIPTIDE Transom

Size	Voltage	Price
36"	12V 45lb	<b>\$400</b>
36"	12V 55lb	<b>\$550</b>
42"	12V 55lb	<b>\$570</b>
42"	24V 80lb	<b>\$1,000</b>
52"	36V 112lb	<b>\$1,250</b>

## BATTERY CHARGERS

#### Precision Chargers

Model	Bank	Amps	Price
MK110PCL	1	10	<b>\$170</b>
MK220PCL	2	10	<b>\$330</b>
MK230PCL	2	15	<b>\$390</b>
MK330PCL	3	10	<b>\$420</b>
MK345PCL	3	15	<b>\$530</b>
MK440PCL	4	10	<b>\$560</b>
MK460PCL	4	15	<b>\$650</b>
MK500PCL	5	10	<b>\$750</b>

# GARMIN®

Harness the power of Garmin at your helm with easy-to-use chartplotters and fishfinders. Get navigation and sonar technology with an intuitive interface that combines advanced technology and connectivity to meet the needs of any captain.



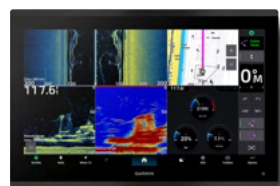
## GPSMAP SERIES

Processing power is 7 times faster than previous generations for superior performance; draw charts quickly, and calculate Auto Guidance+ routes with lightning speed with a Garmin Navionics+ subscription.



## ECHOMAP SERIES

The chartplotters include built-in single-channel CHIRP sonar plus CHIRP ClearVü™ and CHIRP SideVü™ scanning sonars with Panoptix™ and LiveScope™ sonar support on select models (transducers sold separately).



9217xsv



1042xsv



102sv



74sv



STRIKER™ 4

## GPS Map

w/ GTM52M-TM Transducer

9210xsv 10" **\$4,330**

9213xsv 13" **\$5,630**

9217xsv 17" **\$7,830**

## GPS Map

w/ GTM52M-TM Transducer

1042xsv 10" **\$2,000**

1242xsv 12" **\$2,700**

## ECHOMAP ULTRA 2

w/ GT56UHD-TM Transducer

102sv 10" **\$2,500**

126sv 12" **\$3,300**

## ECHOMAP UHD 2

w/ Transducer

54cv 5" **\$500**

74sv 7" **\$1,100**

94sv 9" **\$1,400**

## STRIKER™ 4

w/ Dual-Beam Transducer

**\$200**



18 HD3

## GMR Radome

18 HD3 18" **\$1,800**

Fantom 18" **\$2,200**

Fantom 18x 50w 18" **\$2,300**



GPS 24xd

## GPS 24xd Receiver and Antenna

Requires NMEA KIT

**\$315**

NEMA Starter Kit

**\$105**



VHF 215

## VHF Marine Radio

115 **\$450**

215 **\$560**

215 AJS **\$750**



Live Scope Plus System

## LIVE SCOPE

w/ GLS 10™ & LVS34 TRANSDUCER  
w/ GLS 10™ & LVS62 TRANSDUCER\*

Plus System **\$1,800**

XR\* **\$2,999**

# LOWRANCE



## NEW • EAGLE EYE™ LIVE SONAR

Makes live sonar easy with clear, real-time views of fish and lure movement. Focused down and forward imaging delivers smooth detail and the confidence to strike at the perfect moment.



## ELITE FS SERIES

combines the power of all Lowrance's fish finding tools in a display that's easy to use and install.



## HDS PRO SERIES

Experience the next level of fishfinding with HDS PRO, featuring the ultimate clarity of enhanced sonar and easy bow-to-stern control.



Eagle Eye 9



Elite FS 7



HDS PRO 12



LINK-6s



ACTIVE TARGET 2

**New** Eagle Eye  
with C-MAP US Inland Charts  
w/ CHIRP & DownScan Imaging  
w/ FishReveal™

9" **\$999**

**ELITE FS™**  
w/ ACTIVE IMAGING 3-in-1

7" **\$950**

9" **\$1,100**

10" **\$2,000**

12" **\$2,500**

**HDS Pro**  
w/ ACTIVE IMAGING HD

9" **\$1,900**

10" **\$2,400**

16" **\$3,100**

**LINK VHF RAIDO**

Link-6S **\$295**

Link-9S **\$590**

**ACTIVE TARGET 2**  
(Module + Transducer + Mounts)  
**\$1,700**

# HUMMINBIRD®



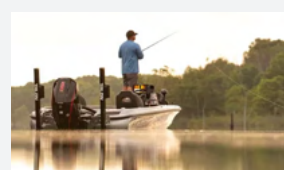
## APEX SERIES

APEX sets the standard with full-HD detail, MEGA Imaging®, and advanced sonar views. Fast, intuitive, and powerful—giving serious anglers the clarity and confidence to stay on fish.



## XPLORE™ SERIES

Smarter, faster, and easier to use. The Xplore™ Series delivers quick access to your favorite fishing tools with a bright touchscreen, intuitive menus, and powerful sonar performance.



## HELIX® SERIES

Reliable, proven Humminbird sonar with clear CHIRP imaging and GPS. A perfect balance of clarity and simplicity for anglers of any level.



APEX 13



XPLORE 10



HELIX CHIRP MEGA 7



HELIX 5 CHIRP



MEGA LIVE 2

**APEX**  
Dual Spectrum CHIRP,  
MEGA SI+, MEGA DI+  
w/ transducer

13" **\$3,700**

**XPLORE**

9 **\$1,500**

10 **\$2,200**

12 **\$2,700**

**HELIX CHIRP**  
MEGA SI GPS G4N  
w/ transducer

7 **\$950**

**HELIX 5 CHIRP**  
DI GPS G3

**\$370**

**MEGA Live 2**  
Forward Facing Sonar  
**\$1,500**

Prices and specifications are subject to change.

stevensmarine.com | ELECTRONICS 53



## Power, Efficiency, and Dependability— Mercury Delivers

At Stevens Marine, we proudly offer the full line of Mercury outboards. Known for reliability, fuel efficiency, and smooth performance. Mercury provides the power you need for every adventure.

As a top Mercury dealer, we offer competitive pricing, expert service, and a complete parts and accessories department.

Choose Stevens Marine and Mercury for exceptional reliability, high resale value, and years of boating enjoyment.



## Upgrade Your Adventure at Stevens Marine!

Your boat is ready for more unforgettable moments—ensure it has the power to keep up with your next great adventure. Upgrade to a new Mercury outboard and experience smooth sailing, endless memories, and exciting journeys ahead!

### 4 STROKE

2.5 MH	\$995	15 E	\$3,470	30 EL GA	\$5,430	175 CXL DTS	\$20,165
3.5 MH	\$1,160	15 EL	\$3,495	30 ELH GA	\$5,565	200 L	\$19,450
3.5 MLH	\$1,185	15 EH	\$3,515	30 EPT	\$5,935	200 XL	\$19,700
4 MH	\$1,535	15 ELH	\$3,530	30 ELPT	\$6,015	200 CXL	\$20,200
4 MLH	\$1,555	15 EPT	\$3,725	30 ELHPT	\$6,140	200 L DTS	\$19,960
5 MH	\$1,735	15 EHPT	\$3,770	40 EPT	\$6,925	200 XL DTS	\$20,210
5 MXLH	\$1,740	15 ELPT	\$3,775	40 ELPT	\$6,980	200 CXL DTS	\$20,710
5 MLHA SP	\$1,755	15 ELPT PK	\$4,035	40 ELHPT TILLER	\$7,525	225 L	\$21,690
5 MH P	\$1,850	15 EXLPT PK	\$4,165	40 ELPT CT	\$7,510	225 XL	\$21,940
6 MH	\$1,930	15 ELHPT PK	\$4,070	50 ELPT	\$7,780	225 CXL	\$22,440
6 MLH	\$1,950	15 EXLHPT PK	\$4,190	50 ELHPT TILLER	\$8,135	225 XXL	\$22,190
8 MH EFI	\$2,560	20 MRC	\$3,615	50 ELPT CT	\$7,960	225 L DTS	\$22,200
8 MLH EFI	\$2,585	20 MH	\$3,650	50 ELHPT CT TILLER	\$8,570	225 XL DTS	\$22,450
8 EH EFI	\$2,915	20 MLH	\$3,680	60 ELPT	\$8,305	225 CXL DTS	\$22,950
8 ELH EFI	\$2,925	20 EH	\$4,025	60 ELHPT TILLER	\$8,765	225 XXL DTS	\$22,700
9.9 MRC EFI	\$2,860	20 E	\$3,995	60 ELPT CT	\$8,370	225 CXXL DTS	\$23,200
9.9 MH	\$2,865	20 ELH	\$4,060	60 EXLPT CT	\$9,070	250 L V8	\$25,135
9.9 MLH	\$2,885	20 EL	\$4,035	60 ELHPT CT TILLER	\$9,195	250 XL V8	\$25,385
9.9 EH EFI	\$3,215	20 EPT	\$4,330	75 ELPT	\$10,035	250 CXL V8	\$25,885
9.9 EL EFI	\$3,220	20 ELHPT	\$4,415	90 ELPT	\$10,590	250 XXL V8	\$25,635
9.9 ELH EFI	\$3,320	20 ELPT	\$4,380	90 EXLPT	\$10,640	250 CXXL V8	\$26,135
9.9 EPT EFI	\$3,570	25 MH	\$4,185	90 ELPT CT	\$10,930	250 L DTS V8	\$25,800
9.9 MLH CT EFI	\$3,030	25 MLH	\$4,210	90 EXLPT CT	\$10,980	250 XL DTS V8	\$26,050
9.9 MXLH CT EFI	\$3,115	25 EH	\$4,740	115 ELPT	\$11,450	250 CXL DTS V8	\$26,550
9.9 ELH CT EFI	\$3,300	25 ELH	\$4,755	115 EXLPT	\$11,500	250 XXL DTS V8	\$26,300
9.9 EXLH CT EFI	\$3,390	25 EL	\$4,725	115 ELPT CT	\$11,785	250 CXXL DTS V8	\$26,800
9.9 ELPT CT PK EFI	\$3,655	25 EPT	\$5,190	115 EXLPT CT	\$11,835	300 L V8	\$27,050
9.9 EXLPT CT PK EFI	\$3,735	25 ELHPT	\$5,345	115 ECXLPT CT	\$11,935	300 XL V8	\$27,300
9.9 ELHPT CT PK EFI	\$3,665	25 ELPT	\$5,270	150 L	\$14,720	300 CXL V8	\$27,800
9.9 EXLHPT CT PK EFI	\$3,745	25 ELPT PK	\$5,270	150 XL	\$14,870	300 L DTS V8	\$27,840
15 MRC	\$3,105	25 EXLPT PK	\$5,395	150 CXL	\$15,370	300 XL DTS V8	\$28,090
15 MH	\$3,130	30 MH GA	\$4,980	175 L DTS	\$19,415	300 CXL DTS V8	\$28,590
15 MLH	\$3,155	30 MLH GA	\$4,995	175 XL DTS	\$19,665		

Prices and specifications are subject to change.

## VERADO

250 L V8	<b>\$27,430</b>
250 XL V8	<b>\$27,680</b>
250 CXL V8	<b>\$28,180</b>
250 XXL V8	<b>\$27,930</b>
250 CXXL V8	<b>\$28,430</b>
300 L V8	<b>\$29,355</b>
300 CL V8	<b>\$29,855</b>
300 XL V8	<b>\$29,605</b>
300 CXL V8	<b>\$30,105</b>
300 XXL V8	<b>\$29,855</b>
300 CXXL V8	<b>\$30,355</b>
350 L V10	<b>\$33,795</b>
350 CL V10	<b>\$34,295</b>
350 XL V10	<b>\$34,045</b>
350 CXL V10	<b>\$34,545</b>
350 XXL V10	<b>\$34,295</b>
350 CXXL V10	<b>\$34,795</b>
350 XXXL V10	<b>\$35,795</b>

400 L V10	<b>\$38,225</b>
400 CL V10	<b>\$38,725</b>
400 XL V10	<b>\$38,475</b>
400 CXL V10	<b>\$38,975</b>
400 XXL V10	<b>\$38,725</b>
400 CCXXL V10	<b>\$39,225</b>
400 XXXL V10	<b>\$40,255</b>
400 CXXXL V10	<b>\$40,725</b>
425 L V10	<b>\$39,245</b>
425 CL V10	<b>\$39,745</b>
425 XL V10	<b>\$39,495</b>
425 CXL V10	<b>\$39,995</b>
425 XXL V10	<b>\$39,745</b>
425 CXXL V10	<b>\$40,245</b>
425 XXXL V10	<b>\$41,245</b>
425 CXXXL V10	<b>\$41,745</b>
600L V10	<b>\$78,415</b>
600 XL V10	<b>\$78,715</b>
600 XXL V10	<b>\$79,615</b>
600 XXXL V10	<b>\$80,515</b>

## PRO XS

115 ELPT	<b>\$12,060</b>
115 EXLPT	<b>\$12,110</b>
115 ELPT CT	<b>\$12,415</b>
115 EXLPT CT	<b>\$12,465</b>
150 L	<b>\$15,290</b>
150 XL	<b>\$15,440</b>
175 L	<b>\$19,240</b>
175 XL	<b>\$19,490</b>
200 L <b>TM</b>	<b>\$21,020</b>
200 L	<b>\$21,020</b>
200 XL	<b>\$21,270</b>
200 L <b>DTS TM</b>	<b>\$21,685</b>
200 XL <b>DTS</b>	<b>\$21,935</b>
225 L <b>TM</b>	<b>\$23,420</b>
225 XL	<b>\$23,700</b>
225 L <b>DTS TM</b>	<b>\$24,085</b>
225 XL <b>DTS</b>	<b>\$24,365</b>
250 L <b>TM</b>	<b>\$24,865</b>
250 XL	<b>\$25,775</b>
250 L <b>DTS TM</b>	<b>\$25,530</b>
250 XL <b>DTS</b>	<b>\$26,440</b>
300 L <b>TM</b>	<b>\$28,945</b>
300 XL	<b>\$29,215</b>
300 L <b>DTS TM</b>	<b>\$29,735</b>
300 XL <b>DTS</b>	<b>\$30,005</b>
300 CXL <b>DTS</b>	<b>\$30,505</b>

## JETS (REMOTE)

25 ELH <b>GA</b> 4S	<b>\$6,310</b>
35 ELPT	<b>\$6,885</b>
60 ELPT 4S (40 Jet)	<b>\$7,595</b>
90 ELPT 4S (65 Jet)	<b>\$11,929</b>
115 ELPT 4S (80 Jet)	<b>\$13,464</b>
150 L 4S (105 Jet)	<b>\$16,529</b>
150 XL 4S	<b>\$16,679</b>
200 L 4S	<b>\$22,826</b>
200 XL 4S	<b>\$23,076</b>
225 L 4S	<b>\$25,066</b>
225 XL 4S	<b>\$25,316</b>
250 L 4S	<b>\$28,511</b>
250 XL 4S	<b>\$28,761</b>
300 L 4S	<b>\$30,426</b>
300 XL 4S	<b>\$30,676</b>

## JETS (TILLER)

25 ELPT 4S	<b>\$6,340</b>
60 ELPT 4S (40 Jet)	<b>\$8,225</b>
90 ELPT 4S (65 Jet)	<b>\$14,144</b>
115 ELPT 4S(80 Jet)	<b>\$15,679</b>
150 L 4S(105 Jet)	<b>\$19,224</b>
150 XL 4S	<b>\$19,374</b>
200 L 4S	<b>\$25,367</b>
200 XL 4S	<b>\$25,617</b>
225L 4S	<b>\$27,607</b>
225 XL 4S	<b>\$27,857</b>
250 L 4S	<b>\$31,052</b>
250 XL 4S	<b>\$31,302</b>
300 L 4S	<b>\$32,967</b>
300 XL 4S	<b>\$33,217</b>

## AVATOR

7.5 ESH <b>AK</b>	<b>\$3,440</b>
7.5 ESRC <b>AK</b>	<b>\$3,240</b>
7.5 ELH <b>AK</b>	<b>\$3,460</b>
7.5 ELRC <b>AK</b>	<b>\$3,260</b>
7.5 EXLH <b>AK</b>	<b>\$3,470</b>
7.5 EXLRC <b>AK</b>	<b>\$3,290</b>
20 ESH	<b>\$3,600</b>
20 ESRC	<b>\$3,580</b>
20 ELH	<b>\$3,630</b>
20 ELRC	<b>\$3,610</b>
20 EXLRC	<b>\$3,640</b>
35 ESH	<b>\$4,500</b>
35 ESRC	<b>\$4,480</b>
35 ELH	<b>\$4,530</b>
35 ELRC	<b>\$4,510</b>
35 EXLH	<b>\$4,560</b>
35 EXLRC	<b>\$4,540</b>
75 ESRC	<b>\$8,250</b>
75 ELH	<b>\$8,510</b>
75 ELRC	<b>\$8,250</b>
75 EXLH	<b>\$8,650</b>
75 EXLRC	<b>\$8,250</b>
110 ELRC	<b>\$9,620</b>
110 EXLRC	<b>\$9,800</b>

### Outboard Motors Key Code

<b>A</b>	Alternator	<b>M</b>	Manual Start
<b>AK</b>	Avator Kit	<b>P</b>	Propane
<b>AT</b>	Advanced Tiller	<b>SP</b>	Sail Power
<b>DTS</b>	Digital Throttle & Shift	<b>TM</b>	Torque Master
<b>C</b>	Counter Rotation	<b>PT</b>	Power Trim
<b>CT</b>	Command Thrust	<b>PK</b>	Pro Kicker
<b>E</b>	Electric Start	<b>L</b>	Long Shaft 20"
<b>GA</b>	Gas Assist	<b>XL</b>	Extra Long Shaft 25"
<b>H</b>	Tiller Handle	<b>XXL</b>	Extra Extra Long Shaft 30"
<b>RC</b>	Remote Control	<b>XXXL</b>	Extra Extra Extra Long Shaft 35"



HEATED  
TILLER  
GRIP\*  
**\$375**



Visit our website!



**VISIT US TODAY!**



### Stevens Marine Tigard

9180 SW Burnham Street Tigard, OR 97223

(503) 620-7023

Fax: (503) 684-8952



### Stevens Marine Milwaukie

18023 SE Addie Street Milwaukie, OR 97267

(503) 652-1444

Fax: (503) 653-5378

**Apply for  
Financing  
Here**



Check Us Out On Social Media



Tag Us **#STEVENS MARINE**